

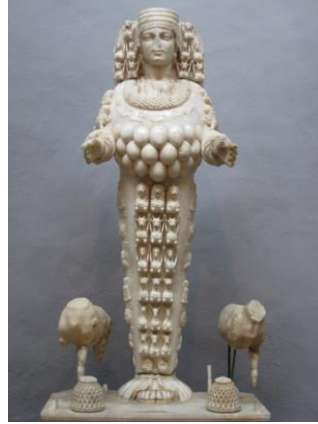
SHAKESPEARE AND THE CLASSICAL WORLD

Comedy of Errors

William Shakespeare
Anonymous C17th portrait

Dr William Sterling
www.williamsterling.co.uk

1



Roman cult statue of Artemis from her Temple at Ephesus. Although Shakespeare set the play in Ephesus, he based it on the Menaechmi by Plautus who set it in the Greek city of Epidamnos in Illyria, renamed Dyrrachium when the Romans conquered it in 229 BC. Plautus lived in the Hellenistic era (254-184 BC) when the temple was at its height. Aristotle used the governance of Epidamnos when writing about strict laws.

2



Roman amphitheatre at Dyrrachium, modern Durrës

3



A column drum from the Temple of Artemis at Ephesus, one of the Seven Wonders of the World, British Museum

4



Ephesus Celsus Library built in c 115 AD as a funerary monument to Tiberius Julius Celsus Polemaeanus by his son Gaius Julius Aquila

5



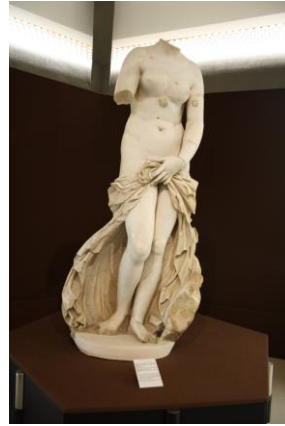
Ephesus Theatre. Ephesus became Roman after 129 BC but the theatre was probably on the site of the Hellenistic one

6



Temple of Apollo, Syracuse

7



Statue of Venus from Syracuse

8



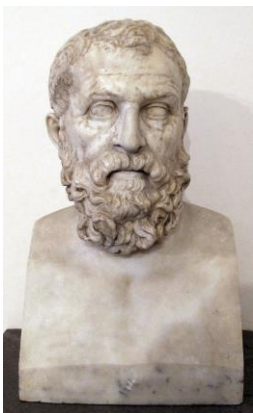
Syracusan coin

9



Tetrachm from Syracuse

10



Roman copy of a Hellenistic bust of Solon of Athens who lived in the C7th-C6th BC and was renowned for his law-making. Solinus Duke of Ephesus may have taken his name from him. He is also mentioned in Titus Andronicus

11



J Coghlan 1816 watercolour of Act IV, Scene 1 Antipholus of Ephesus, an officer, and Dromio of Ephesus

12



Thomas Stothard c 1820

13



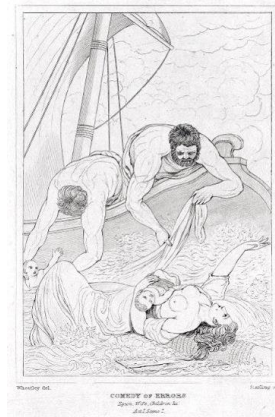
Act IV Scene 4 by John Masey Wright 1820s

14



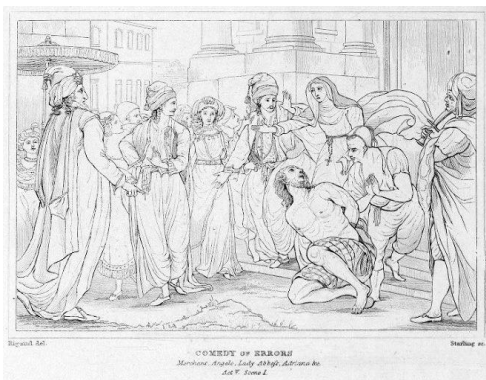
Act IV Scene 4 by John Masey Wright 1820s

15



William Francis Starling c 1825

16



William Francis Starling c 1825

17



Two Dromios by Henry Richter 1829

18



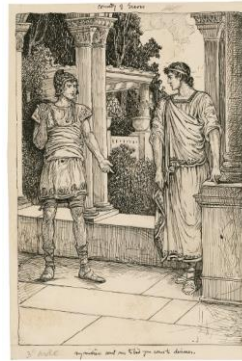
The Dromios from a frontispiece dated 1890



1879 Poster for Broadway Production Starring Stuart Robson and William Crane

Dr William Sterling
www.williamsterling.co.uk

19



"My mistress sent me" by Louis Rhead pre 1918

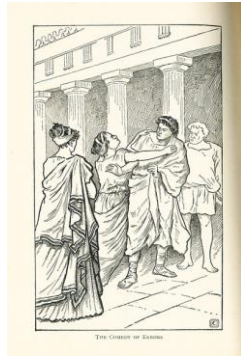


"Plead you to me" by Louis Rhead pre 1918

20

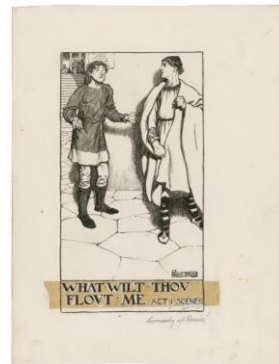


Shipwreck by Louis Rhead

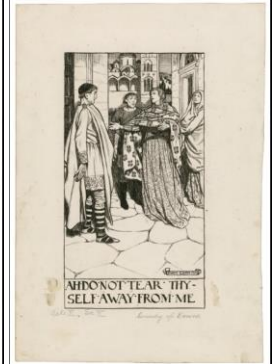


From "Tales from Shakespeare" by Charles and Mary Lamb, Illustrations by Louis Monziès after H. Pille, Heath & Co 1901,

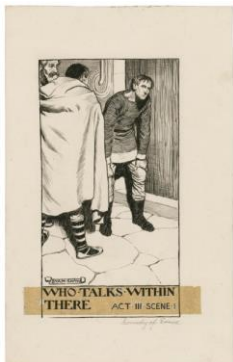
21



22



Byam Shaw c 1900

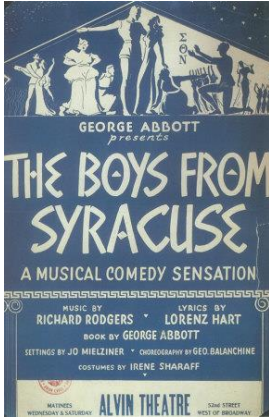


23



24





Poster for 1938 Production

